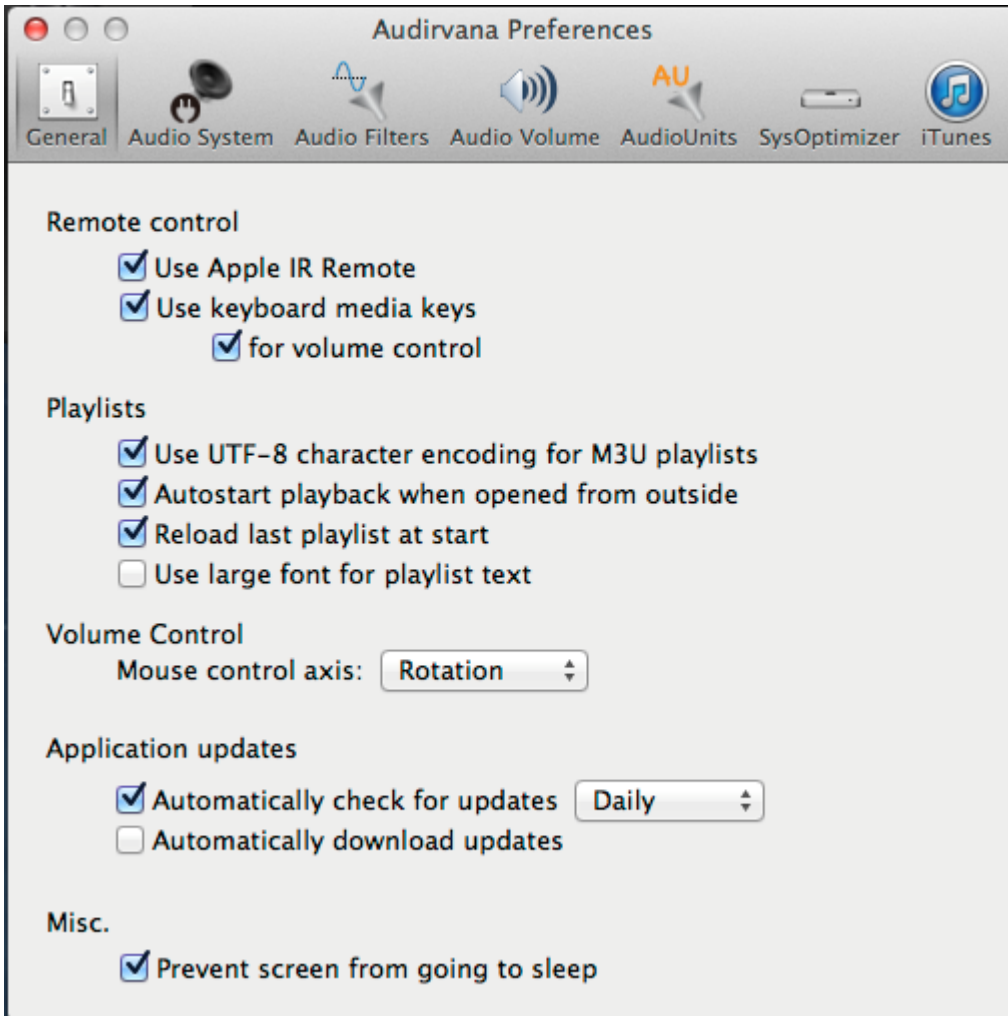


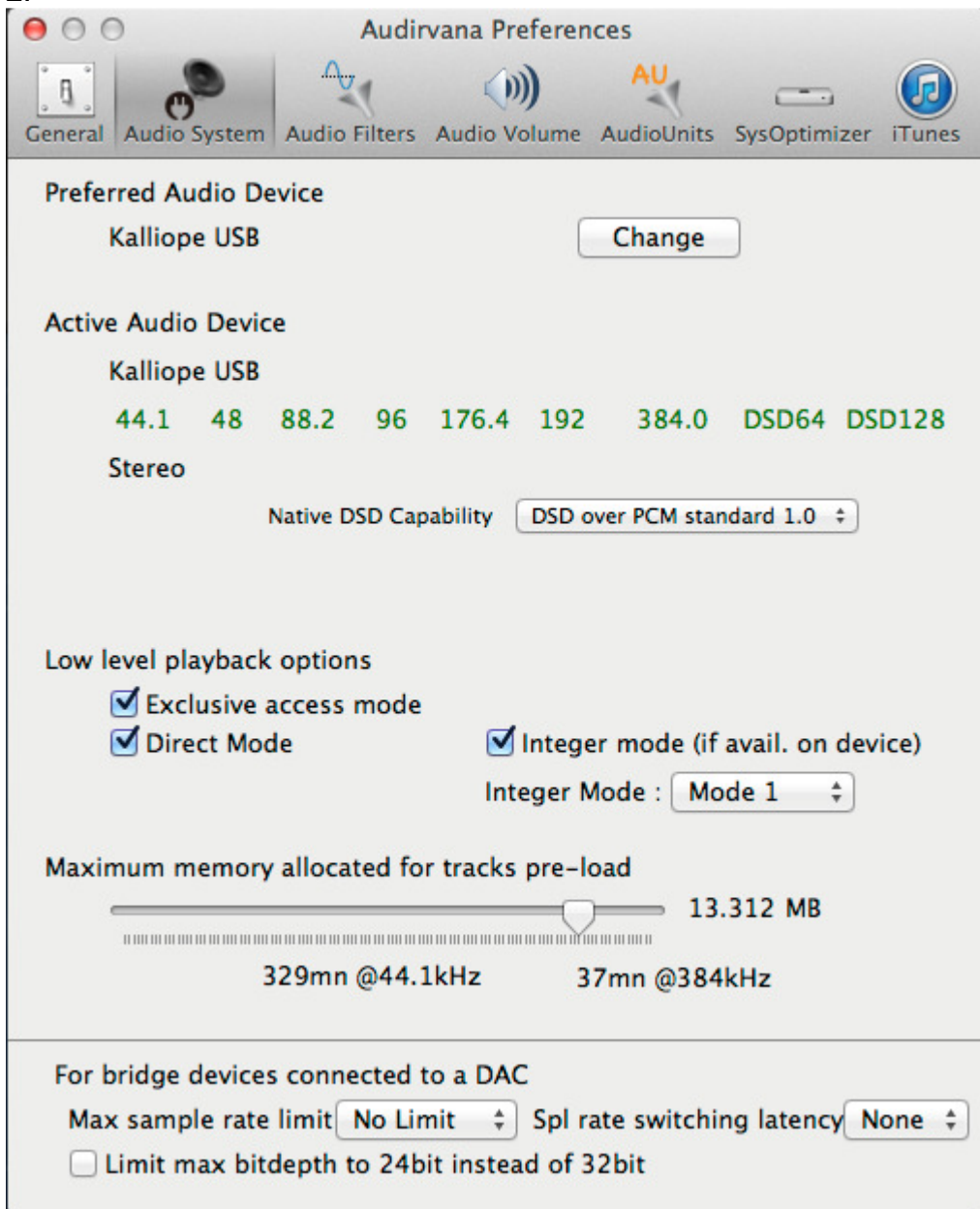
## Audirvana Plus, Kalliope setup:

Go to the Audirvana Preference setup menu and change to the below settings:

1.



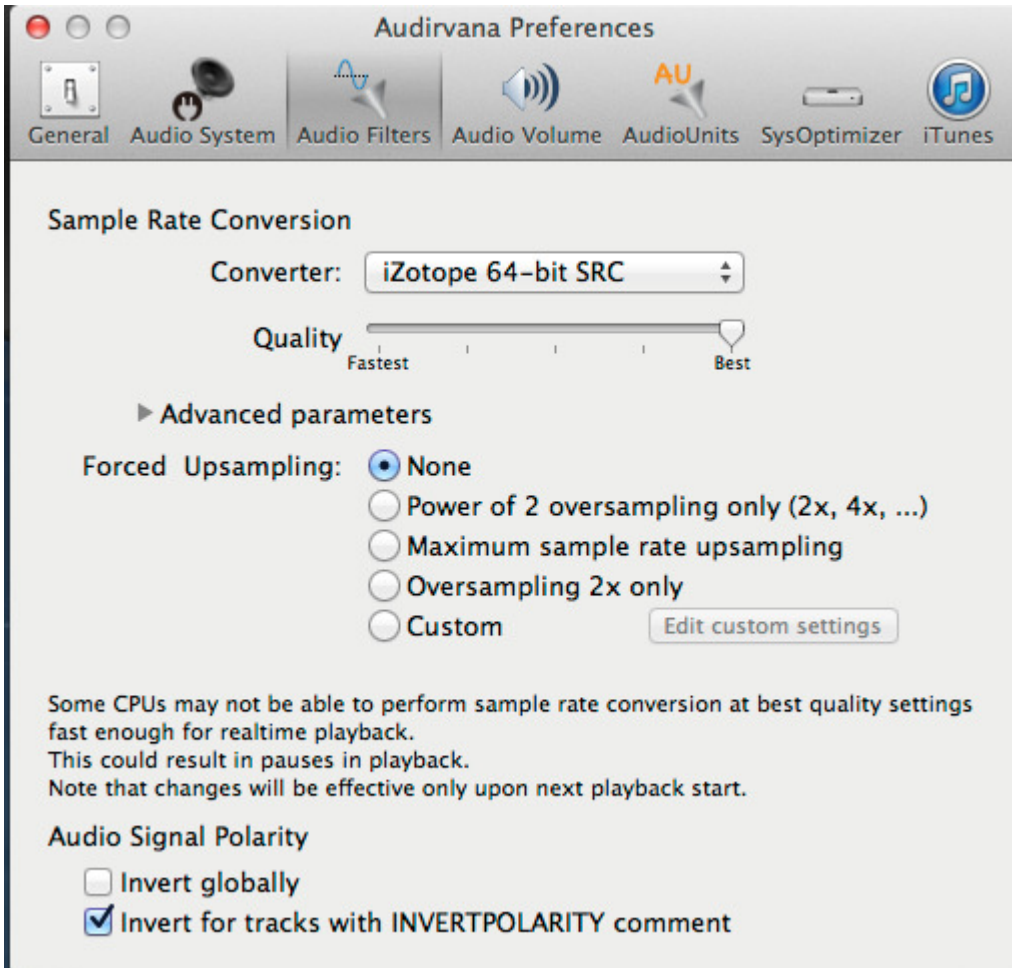
2.



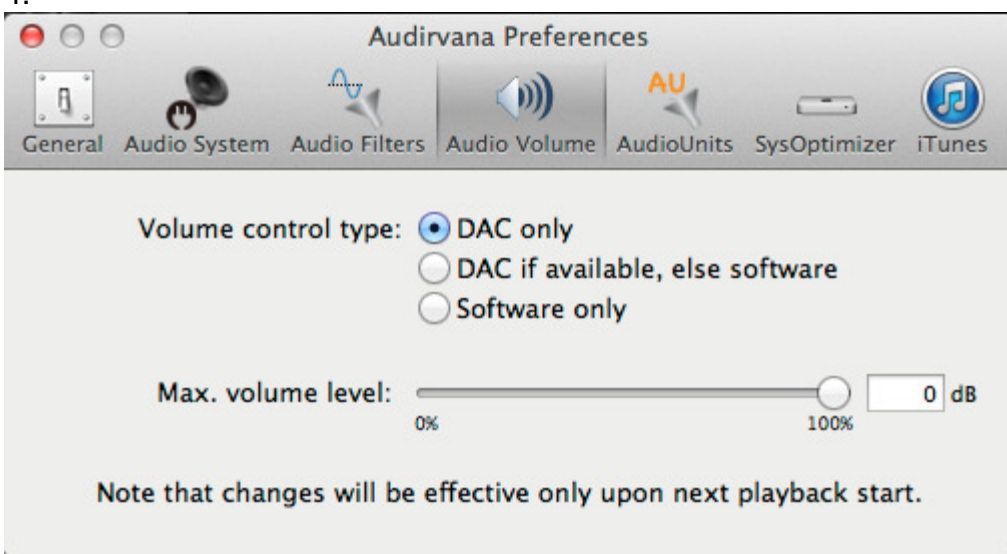
### **Important!**

Choose the "Kalliope USB" option and  
Native DSD Capability: "DSD over PCM standard 1.0"

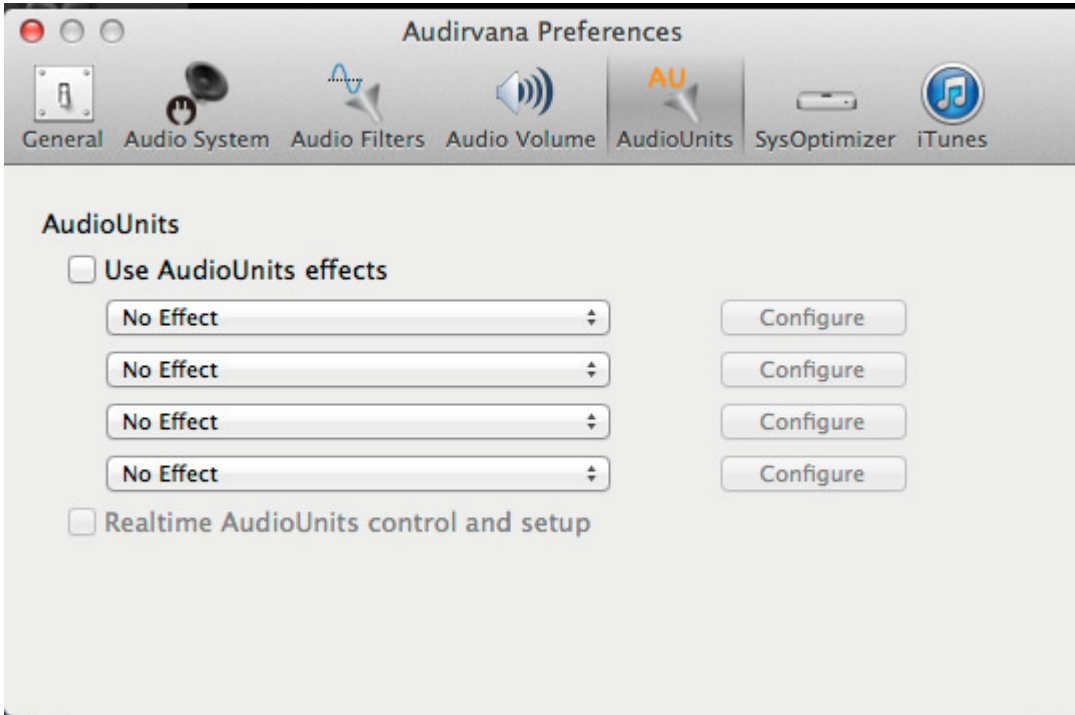
3.



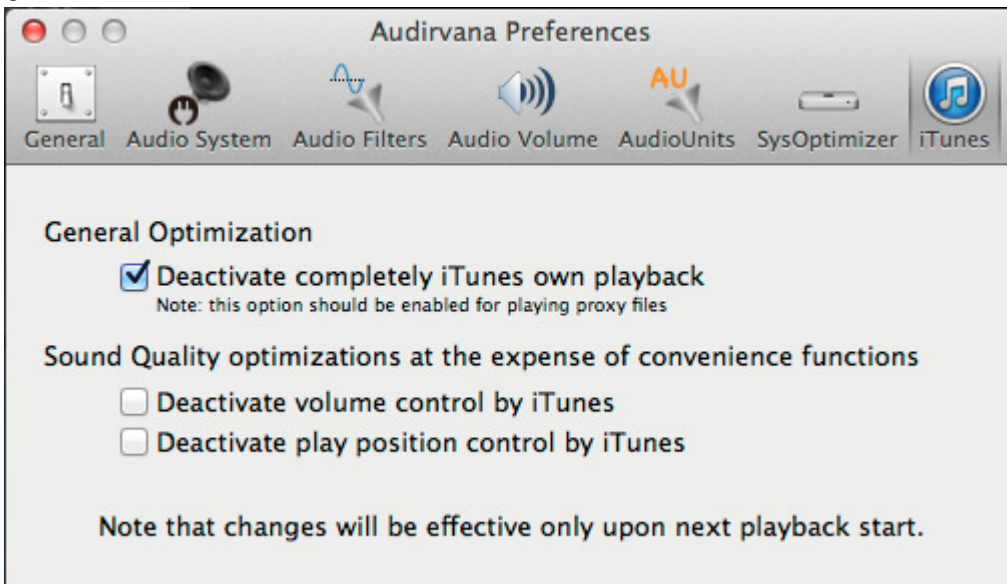
4.



5.



6.



Close Audirvana Preferences.

Done.