



GRYPHON AUDIO DESIGNS

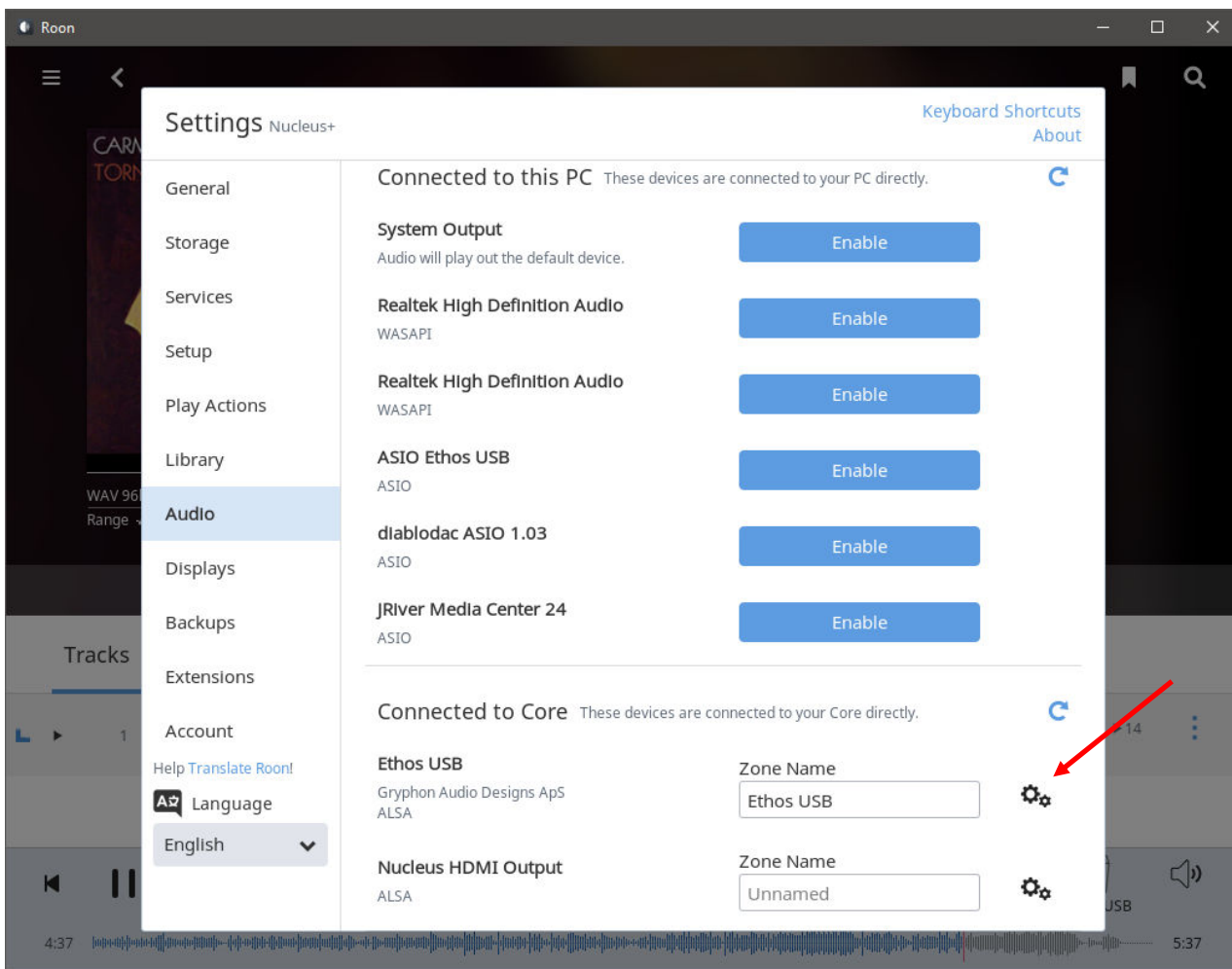
Gryphon Ethos, Roon Core Setup Rev. 1.0

This is a short guide that explains how to connect and setup a Roon Core to the Gryphon Ethos.

Connect your Roon Core (ex. Roon Nucleus or Nucleus Plus) to your Gryphon Ethos USB input 1 via your preferred audio USB cable.

Shortly after turning on the Gryphon Ethos, the Ethos USB should be identified by the Roon Core.

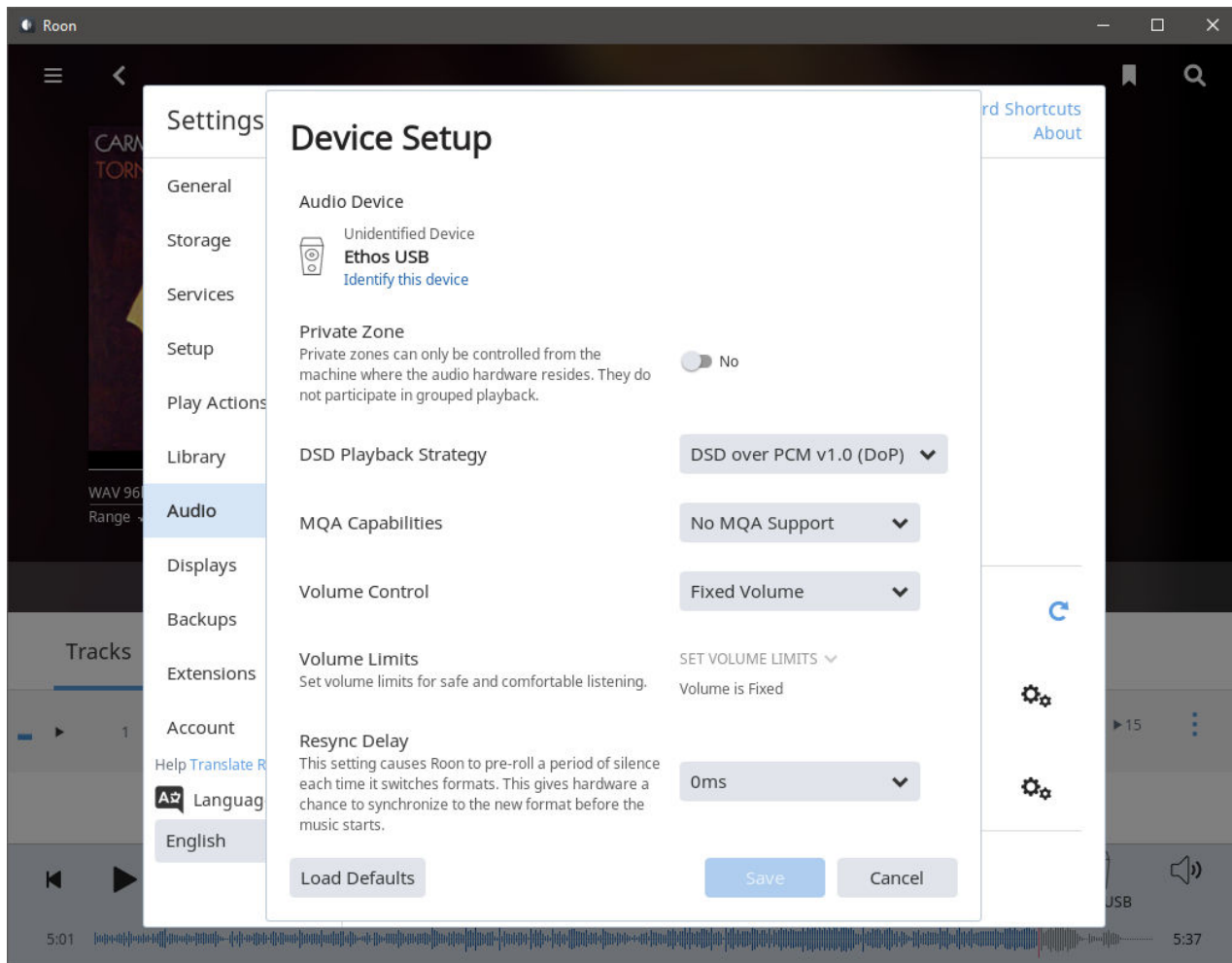
Make sure that the Ethos USB is recognized by the Roon Core, under Roon 'Settings' and are activated, se below:





GRYPHON AUDIO DESIGNS

Under Roon 'Device Setup', make sure the below settings are chosen:

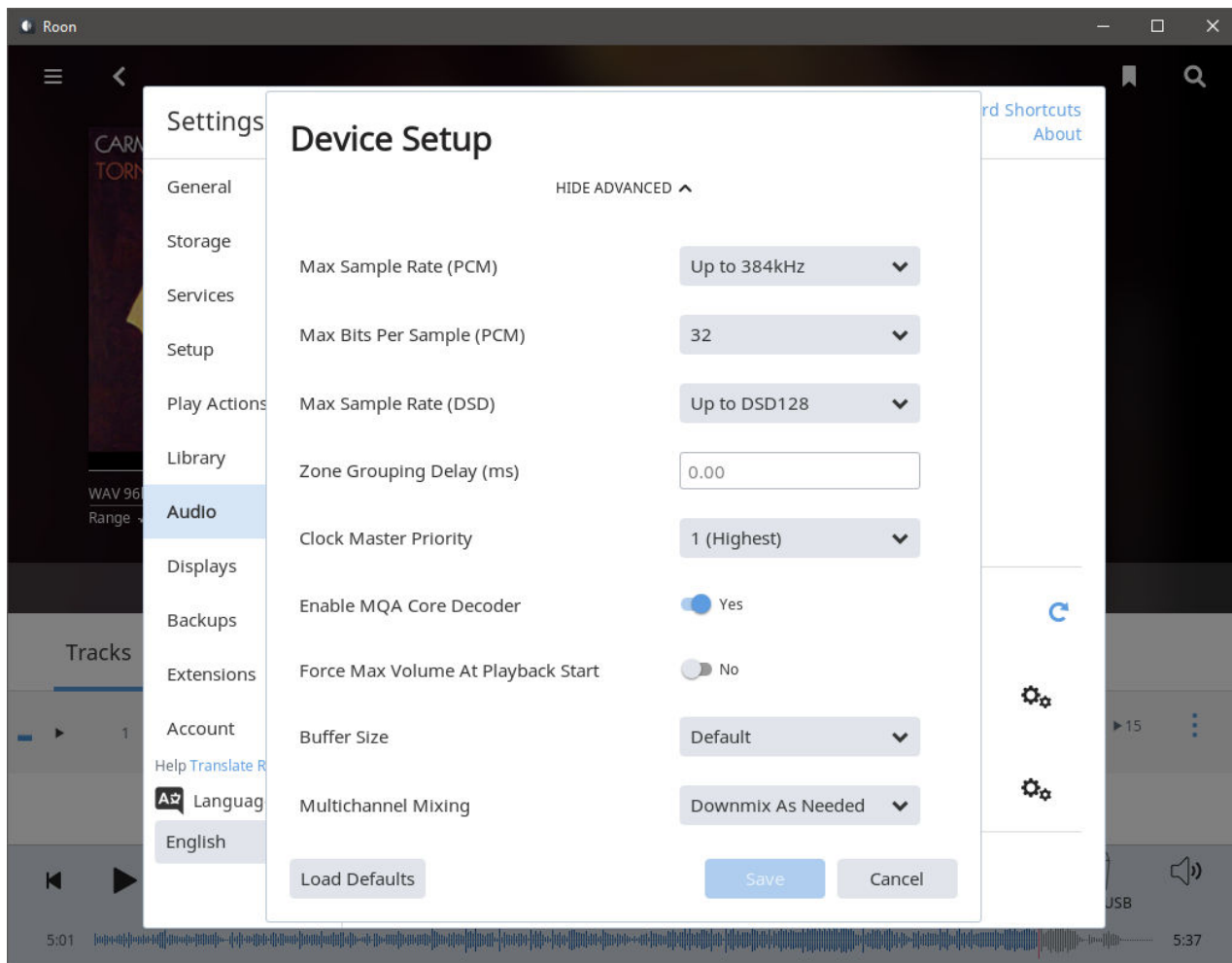


GRYPHON AUDIO DESIGNS



GRYPHON AUDIO DESIGNS

Finally, under Roon 'Advanced Device Setup' make sure the below settings are chosen:



That's it - please enjoy your music collection!